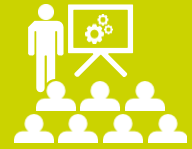




**KENYA SCHOOL OF GOVERNMENT
MOMBASA CAMPUS**
Empowering the Public Service

**2026
2027**



2026 - 2027 FY

TRAINING Calendar





Training Calendar

2026 - 2027 FY

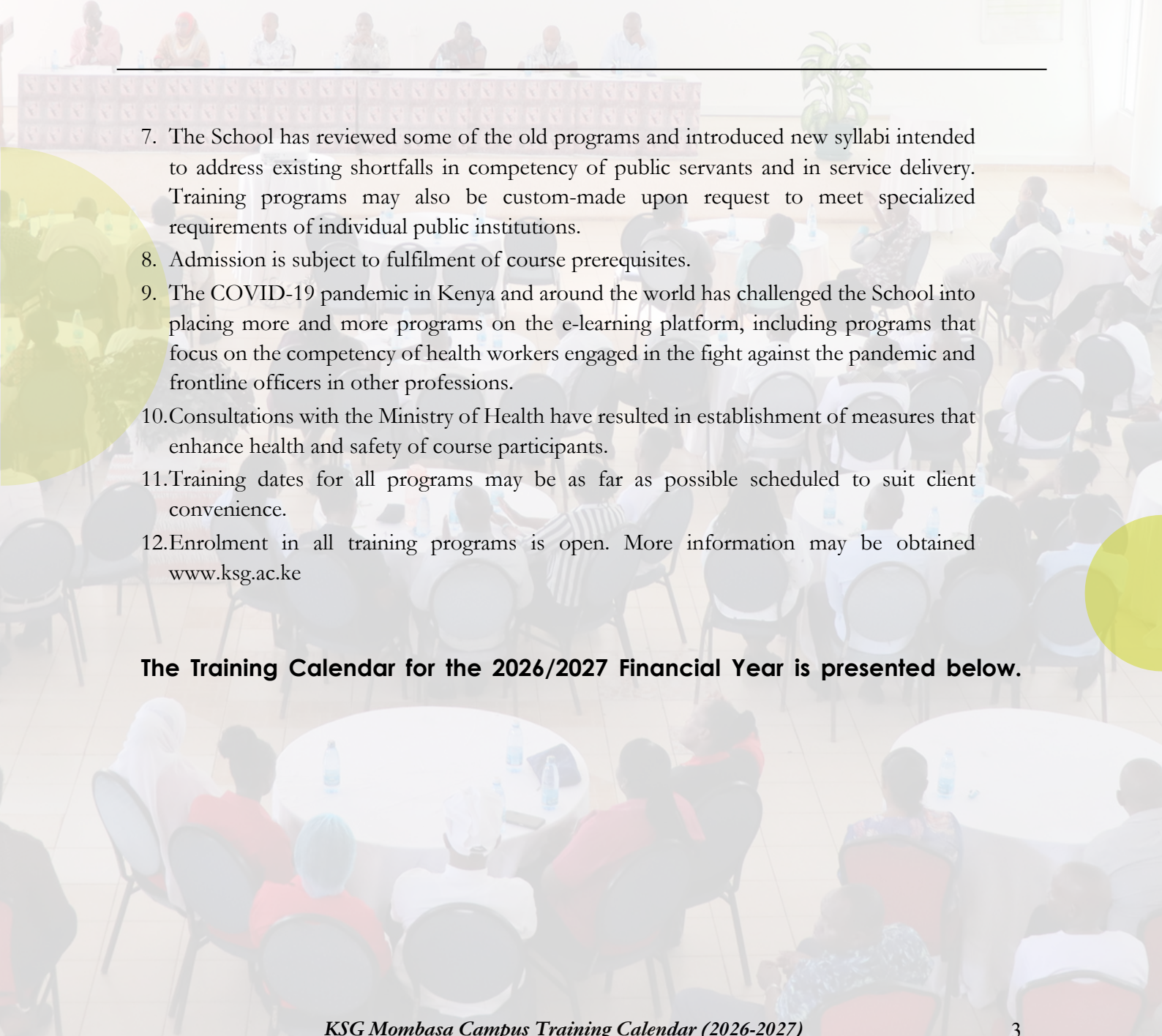
TRANSFORMING THE PUBLIC SERVICE THROUGH COMPETENCY DEVELOPMENT

1. The Kenya School of Government is responsible for the transformation of the Public Service through the development of knowledge and competencies among public servants, leading to continuous improvement in the quality of services offered to citizens. The School offers capacity-building programs on leadership and management-related issues through:
 - Training that is designed to promote professional expertise and public service values;
 - Research to improve Institutional problem-solving ability
 - Consultancy services to support organizational re-engineering of public institutions; and
 - Advisory services for policy reform
2. The capacity development programs and services that the School offers are geared to meet the expectations of citizens in institutional performance by enabling public officials to:
 - Efficiently and promptly respond to citizen needs;
 - Make services readily available and accessible;
 - Discharge duties professionally;
 - Embrace corruption-free behaviour,
 - Accommodate views of citizens in decision making, and
 - Demonstrate patriotism by prioritizing public interest above personal interest.
3. The School appreciates the important role that every public servant has to play in order to realize Government goals and therefore has placed on offer competency development programs for all levels and categories of public officials, from lowest ranking officers to the highest. The programs cater also to public servants in Government ministries, state corporations, constitutional commissions, the Judiciary, legislature, and County Governments. Trainees from the private sector, non-Governmental organizations and foreign countries are also welcome at the School.
4. The trainees attend the programs in the five KSG campuses at Baringo, Embu, Lower Kabete, Matuga and Mombasa. Online programs that are coordinated by the e-Learning and Development Institute are also available to participants.
5. Training activities may be conducted at the clients work station or any other preferred venue.
6. Public servants attending KSG programs are usually either newly appointed or serving officers with considerable experience in their fields of professional practice. The calibre of faculty and trainers at the School are therefore distinguished professionals with appropriate knowledge, training, and above all, rich practical experience in Public sector leadership and management. Trainees graduating from KSG are sufficiently prepared to serve consistent with established professional standards.



Training Calendar

2026 - 2027 FY

- 
7. The School has reviewed some of the old programs and introduced new syllabi intended to address existing shortfalls in competency of public servants and in service delivery. Training programs may also be custom-made upon request to meet specialized requirements of individual public institutions.
 8. Admission is subject to fulfilment of course prerequisites.
 9. The COVID-19 pandemic in Kenya and around the world has challenged the School into placing more and more programs on the e-learning platform, including programs that focus on the competency of health workers engaged in the fight against the pandemic and frontline officers in other professions.
 10. Consultations with the Ministry of Health have resulted in establishment of measures that enhance health and safety of course participants.
 11. Training dates for all programs may be as far as possible scheduled to suit client convenience.
 12. Enrolment in all training programs is open. More information may be obtained www.ksg.ac.ke

The Training Calendar for the 2026/2027 Financial Year is presented below.

MOMBASA CAMPUS TRAINING CALENDAR

SCHEDULE OF COURSES FOR 2026/2027

CODE	PROGRAMME	DURATION	TARGET GROUP	DATES	COST (KSHS.)
EXECUTIVE LEADERSHIP PROGRAMS					
LPNT	Leadership Program for National Transformation	5 Weeks	<i>This Program is specially designed for senior public or private sector officials preparing to rise to higher leadership positions in society. Each cohort will appropriately comprise participants from across all arms, agencies and levels of government for development of common understanding in the public sector under the auspices of the Whole-of-Government approach to national transformation.</i>	On Request	800,400 Non-Residential
AOP	Accounting Officers Program	5 Days	Accounting Officers in Ministries, County Governments, State Corporations, Constitutional Commissions, Legislature, Judiciary, Independent offices, and private sector corporate.	Sept 7 - 11, 2026 April 12 - 16, 2027	175,000 Non-Residential
AOPC	Accounting Officers Program for County Governments	5 Days	Accounting Officers in Ministries, County Governments, State Corporations, Constitutional Commissions, Legislature, Judiciary, Independent offices, and private sector corporate.	5 - 9 Oct, 2026 8 - 12 Mar, 2027	175,000 Non-Residential
PIPI	Induction Program for the Public Service	5 Days	Newly appointed Public officers	On Request	127,000 Residential Executive

SCHEDULE OF COURSES FOR 2026/2027

CODE	PROGRAMME	DURATION	TARGET GROUP	DATES	COST (KSHS.)
					87,000 Non-Residential
IPMB	Induction Program for Municipal Boards	5 Days	Newly appointed Municipal Board Members	On Request	127,000 Residential Executive 87,000 Non-Residential
IPSA	Induction Program for Special advisors	5 Days	Officials engaged to provide specialized policy or strategic support	On Request	127,000 Residential Executive 87,000 Non-Residential
LPHU	Leadership program for Heads of Universities	5 days	Vice Chancellors, Deputy Vice Chancellors, Registrars, Deans of Schools and Heads of Departments. It also targets any other Senior University Staff responsible for providing leadership at the university	On Request	127,000 Residential Executive 87,000 Non-Residential
TLC	Transformative Leadership Course	5 Days	Public officials and other individuals responsible for institutional and business re-engineering in their organizations.	Aug 17 - 21, 2026 Nov 23 - 27, 2026 June 7 - 11, 2027	127,000 Residential Executive 87,000 Non-Residential
ERMP	Enterprise Risk Management in Public Sector	5 Days	This program is designed for chief executive officers, directors, legal officers risk and internal audit professionals, audit and risk committee members, heads of departments in finance and accounts, audit, procurement, human resource, ICT and other	Oct 12 - 16, 2026 March 8 - 12, 2027	79,576 Residential Executive 60,649 Residential Standard 44,774 Non-Residential

SCHEDULE OF COURSES FOR 2026/2027

CODE	PROGRAMME	DURATION	TARGET GROUP	DATES	COST (KSHS.)
			officers who undertake risk management roles in national government, county government and public institutions		
SLDP	Strategic Leadership Development Program	6 Weeks	Officers in leadership and policy-making roles, typically in Job Grades P and above, and their equivalent.	6 July – 14 Aug. 2026 17 Aug. – 25 Sept 2026 28 Sept – 6 Nov 2026 9 Nov – 18 Dec 2026 11 Jan – 19 Feb 2027 22 Feb – 2 April 2027 5 April – 14 May 2027 17 May – 25 June 2027 28 June – 6 Aug. 2027	266,815 Residential Executive 240,357 Residential Standard 172,140 Non-Residential (With One Week's Accommodation at KSG Matuga)
SLDP-O	Strategic Leadership Development Program - Online	10 Weeks (Blended Online/Physical)	Officers in leadership and policy-making roles, typically in Job Grades P and above, and their equivalent.	6 July – 11 Sept 2026 14 Sept – 20 Nov 2026 11 Jan – 19 Mar 2027 22 Mar – 28 May 2027 31 May – 6 Aug. 2027	149,280 Online (With One Weeks's Accommodation at KSG Matuga)
CGPB	Corporate Governance for Public Sector Boards	5 Days	Members of constitutional commissions and boards or councils of state corporations and other semi-autonomous government agencies.	Aug 17 - 21, 2026 Nov 23 - 27, 2026 June 7 - 11, 2027	127,000 Residential Executive 87,000 Non-Residential
CGWS	Corporate Governance for Water Sector Agencies	5 Days	This program is recommended for members of county assemblies, county executive committee, chairpersons and members of boards, senior management of	Sept 21 - 25, 2026 April 19 - 23, 2027	127,000 Residential Executive 87,000 Non-Residential

SCHEDULE OF COURSES FOR 2026/2027

CODE	PROGRAMME	DURATION	TARGET GROUP	DATES	COST (KSHS.)
			water service providers and other stakeholders in the water services sector in Kenya.		
BETA	Bottom-Up Economic Transformation Agenda	5 Days	<p>This program is recommended for:</p> <p>i. Public officers in national and county governments involved in policy development, implementation, and monitoring.</p> <p>ii. State officers responsible for the establishment and enforcement of legal and regulatory frameworks.</p> <p>iii. Other stakeholders engaged in the dissemination and execution of BETA.</p> <p>Entry Requirements</p> <p>The targeted participants should possess demonstrated involvement in policy development or implementation processes</p>	<p>Oct 26 - 30, 2026</p> <p>May 10 - 14, 2027</p>	<p>127,000 Residential Executive</p> <p>87,000 Non-Residential</p>
SPM	Strategic Planning and Management	5 Days	Senior officers who require knowledge and skills in envisioning the “big picture” in the organization	June 7 - 11, 2027	<p>79,576 Residential Executive</p> <p>60,649 Residential Standard</p> <p>44,774 Non-Residential</p>

SCHEDULE OF COURSES FOR 2026/2027

CODE	PROGRAMME	DURATION	TARGET GROUP	DATES	COST (KSHS.)
MANAGEMENT DEVELOPMENT PROGRAMS					
SMC	Senior Management Course	20 Days	Managers responsible for managing resources in their organizations' and are in 'JG' K and above or its equivalent	6 – 31 July 2026 3 – 28 August 2026 31 Aug – 25 Sept. 2026 28 Sept. – 23 Oct. 2026 26 Oct. – 20 Nov. 2026 23 Nov.– 18 Dec. 2026 11 Jan – 5 Feb, 2027 8 Feb – 5 Mar, 2027 8 Mar – 2 Apr 2027 5 - 30 Apr, 2027 May 3 – 28, 2027 May 31- 25 June, 2027	255,316 Residential Executive 197,618 Residential Standard 132,288 Non-Residential
SMC-O	Senior Management Course	8 Weeks (Blended Online/Physical)	Managers responsible for managing resources in their organizations' and are in 'JG' K and above or its equivalent	6 July – 28 August 2026 31 Aug – 23 Oct 2026 26 Oct – 18 Dec 2026 11 Jan – 5 Mar 2027 8 March – 30 April 2027 3 May – 25 June 2027	92,800 Online
PPFI	Public Policy Formulation Implementation and Analysis	5 Days	Manager responsible for developing policies.	Aug 17 - 21, 2026 Nov 23 - 27, 2026 June 7 - 11, 2027	127,000 Residential Executive 87,000 Non-Residential
MSME	Management of Micro, Small and Medium Enterprises	5 Days	Organizations, Technical and other qualified persons (0 level leavers) Ex-Servicemen, potential	Feb 8 - 12, 2027	79,576 Residential Executive 60,649 Residential Standard

SCHEDULE OF COURSES FOR 2026/2027

CODE	PROGRAMME	DURATION	TARGET GROUP	DATES	COST (KSHS.)
			entrepreneurs (Women and youth), and the retirees from public service.		44,774 Non-Residential
SDPM	Skills Development Program for Managers of Educational Institutions	5 Days	This Program targets Boards of Management, managers of educational institutions, their deputies and heads of departments both in public and private sectors. It also targets educational officers at County and national levels.	On Request	79,576 Residential Executive 60,649 Residential Standard 44,774 Non-Residential
YLD	Young Leaders Development Program	5 Days	Leaders from across universities & middle level colleges including elected, nominated & aspiring young leaders	March 1 - 5, 2027 June 14 - 18, 2027	79,576 Residential Executive 60,649 Residential Standard 44,774 Non-Residential
EYSE	Entrepreneurship for Youth engaged in SMEs	5 Days	Youth from various sectors within the economy.	On Request	79,576 Residential Executive 60,649 Residential Standard 44,774 Non-Residential
TOT	Training of Trainers	10 Days	Trainers, training managers, members of training committees,	May 17 - 28, 2027	154,675 Residential Executive

SCHEDULE OF COURSES FOR 2026/2027

CODE	PROGRAMME	DURATION	TARGET GROUP	DATES	COST (KSHS.)
			human resource officers and community officers		113,666 Residential Standard 77,236 Non-Residential
TOT-O	Training of Trainers (Online)	20 Days	Trainers, training managers, members of training committees, human resource officers and community officers	June 7 - 2 July, 2027	46,400 Online
ECIPS	Essentials of Counseling in the Public Service	10 Days	All Public Officers	Nov 9 - 20, 2026 May 17 - 28, 2027	154,675 Residential Executive 113,666 Residential Standard 77,236 Non-Residential
ESCD	Mainstreaming Economic Social and Cultural Rights in Development	5 Days	County executive committee members, Chief officers, County Attorneys, Officers responsible for planning, County administrators, Directors and other senior officers of ministries, departments and agencies and Council of Governors	On Request	127,000 Residential Executive 87,000 Non-Residential
ICPS	Innovation and Creativity in the Public Service	10 Days	Administrators, Human resource and Human development officers, Innovation and Business development officers, Marketing managers, and Senior ICT officers	Nov 9 - 20, 2026 May 10 - 21, 2027	154,675 Residential Executive 113,666 Residential Standard 77,236 Non-

SCHEDULE OF COURSES FOR 2026/2027

CODE	PROGRAMME	DURATION	TARGET GROUP	DATES	COST (KSHS.)
					Residential
PDSA	Prevention of Alcohol, Drug and Substance Abuse	5 Days	<p>This training program is recommended to all staff in an organization. It is relevant to staff of all cadres including but not limited to: Executives, General Managers, Heads of Departments, Senior Managers, Drugs and Substance Abuse Committee Members, Peer Counsellors, Human Resource Staff, Chiefs and Sub-chiefs.</p> <p>Entry Requirements This course is open to all individuals with a Kenya Certificate of Secondary Education (KCSE) both in the public and private sector interested in learning more about management of drugs and substance abuse</p>	<p>Oct 5 - 9, 2026 Feb 1 - 5, 2027 May 24 - 28, 2027</p>	<p>154,675 Residential Executive 113,666 Residential Standard 77,236 Non-Residential</p>
COMMUNICATION MANAGEMENT PROGRAMS					
CMM	Conduct of Meetings and Minute Writing Course	5 Days	Officers whose portfolios entail chairing or taking minutes in meetings.	<p>Sept 7 - 11, 2026 Nov 23 - 27, 2026 March 1 - 5, 2027 June 7 - 11, 2027</p>	<p>79,576 Residential Executive 60,649 Residential Standard</p>

SCHEDULE OF COURSES FOR 2026/2027

CODE	PROGRAMME	DURATION	TARGET GROUP	DATES	COST (KSHS.)
					44,774 Non-Residential
RWC	Report Writing Course	5 Days	Officers involved in preparation of reports.	Sept 7 - 11, 2026 Nov 23 - 27, 2026 March 1 - 5, 2027 June 7 - 11, 2027	79,576 Residential Executive 60,649 Residential Standard 44,774 Non-Residential
PEM	Government Protocol, Etiquette and Events Management Course	5 Days	Senior officers, protocol officers, event managers, front office staff, and other interested persons.	Oct 5 - 9, 2026 Feb 1 - 5, 2027 May 24 - 28, 2027	79,576 Residential Executive 60,649 Residential Standard 44,774 Non-Residential
PSPS	Public Speaking and Presentation Skills	5 Days	Heads of Departments, Commissioners, County Administrators, advisors to senior officers, and other senior public officers responsible for presenting reports and speeches.	26 – 30 Oct, 2026 1 – 5 Mar, 2027	79,576 Residential Executive 60,649 Residential Standard 44,774 Non-Residential
CSS	Customer Care Course	5 Days	Front office staff, secretaries and personal assistants in the Public Service, private sector and Non-governmental Organizations (NGOs)	Oct 12 - 16, 2026 Feb 1- 5, 2027 June 7 - 11, 2027	79,576 Residential Executive 60,649 Residential Standard 44,774 Non-Residential

SCHEDULE OF COURSES FOR 2026/2027

CODE	PROGRAMME	DURATION	TARGET GROUP	DATES	COST (KSHS.)
CSPS	Communication Skills for Public Service Officers	5 Days	Officers in county and national governments involved in packaging and disseminating information	Nov 9 - 13, 2026 March 1 - 5, 2027 June 14- 18, 2027	79,576 Residential Executive 60,649 Residential Standard 44,774 Non-Residential
CUSTOMER SERVICE EXCELLENCE PROGRAMS (IN COLLABORATION WITH HUDUMA KENYA SECRETARIAT)					
CSEM	Customer Service Excellence Program for Senior Managers	5 Days	This Program is intended for senior managers in the Public Service, Private and Non-Governmental Organizations (NGO)	July 20 – 24, 2026	127,728 Residential Executive 77,198 Non-Residential
CSEF	Customer Service Excellence Program for Frontline Officers	5 Days	The Program targets all officers working at the frontline desks or counters in Huduma Centres and any other customer facing departments, sections and organizations. They include: customer care officers from Government Ministries, Departments, Agencies and Counties (MDACs); Non- Governmental Organizations (NGOs) and the private sector.	March 15 – 19, 2027	127,728 Residential Executive 77,198 Non-Residential

SCHEDULE OF COURSES FOR 2026/2027

CODE	PROGRAMME	DURATION	TARGET GROUP	DATES	COST (KSHS.)
CSEQ	Customer Service Excellence Program for Quality Standard Assessors	10 Days	This training is intended for officers who wish to be trained as CSE Quality Standard Assessors/Auditors in the Public Service, the Private Sector and Non-Governmental Organizations (NGOs)	Oct 12 – 23, 2026	255,455 Residential Executive 154,396 Non-Residential
SUPERVISORY SKILLS DEVELOPMENT PROGRAMS					
MSC	Management Skills Course (Formerly Supervisory Management Skills Course)	20 Days	Supervisors in JG “G” and above or equivalent	Aug 3 - 28, 2026 Mar 1 - 26, 2027 May 31 - Jun 25, 2027	255,316 Residential Executive 197,618 Residential Standard 132,288 Non-Residential
MOA	Management Course for Office Administrators (Formerly Secretarial Management Training)	20 Days	Senior office administrators in ministries, county Governments and state corporations.	Nov 9 - Dec 4, 2026 April 5 - 30, 2027	255,316 Residential Executive 197,618 Residential Standard 132,288 Non-Residential
EOAC	Executive Office Administrators Course	15 Days	Office administrators deployed in executive offices in MDACs and private organizations	May 3 - 21, 2027	215,800 Residential Executive 156,507 Residential Standard 97,800 Non-Residential

SCHEDULE OF COURSES FOR 2026/2027

CODE	PROGRAMME	DURATION	TARGET GROUP	DATES	COST (KSHS.)
RMC	Records Management Course	20 Days	Officers handling records	Sept 7 - Oct 2, 2026 March 1 - 26, 2027 May 31 - June 25, 2027	255,316 Residential Executive 197,618 Residential Standard 132,288 Non-Residential
PCC	Proficiency Course for Clerical Officers	10 Days	Officers intending to sit for Proficiency Examination for Clerical Officers	July 13 - 24, 2026 July 12 - 23, 2027	154,675 Residential Executive 113,666 Residential Standard 77,236 Non-Residential
RPP	Retirement Planning Program	5 Days	All employees in the public service.	July 13 - 17, 2026 Sept 7 - 11, 2026 Nov 16 - 20, 2026 Jan 25 - 29, 2027 March 8 - 12, 2027 April 26 - 30, 2027 June 14 - 18, 2027	79,576 Residential Executive 60,649 Residential Standard 44,774 Non-Residential
HUMAN RESOURCE AND PERFORMANCE MANAGEMENT PROGRAMS					
CMP	Coaching and Mentoring in the Public Service	5 days	Equips heads of departments with competencies to institutionalize coaching and mentorship strategies that ensure improvement of service delivery and continuous learning	On Request	79,576 Residential Executive 60,649 Residential Standard 44,774 Non-Residential

SCHEDULE OF COURSES FOR 2026/2027

CODE	PROGRAMME	DURATION	TARGET GROUP	DATES	COST (KSHS.)
			on the job, whilst promoting succession management.		
HRA	Human Resource Advisory Committee Course	5 Days	Members of Ministerial, County and HR Advisory Committees, Staff Advisory Committee Members	On Request	79,576 Residential Executive 60,649 Residential Standard 44,774 Non-Residential
PIM	Productivity Measurement and Improvement	5 Days	Human resource directors and managers, development officers and quality assurance officers.	On Request	79,576 Residential Executive 60,649 Residential Standard 44,774 Non-Residential
JEPS	Job Evaluation in the Public Service	5 Days	Heads of HR function/ HR managers, members of public service boards, line managers, supervisors/heads of departments, job analysts, members of job description analysis committees.	On Request	79,576 Residential Executive 60,649 Residential Standard 44,774 Non-Residential
CBPS	Collective Bargaining in the Public Service	5 Days	Employers and workers representatives, industrial relations practitioners (trade unions, HR and line managers, senior managers, mediators,	On Request	127,000 Residential Executive 87,000 Non-Residential

SCHEDULE OF COURSES FOR 2026/2027

CODE	PROGRAMME	DURATION	TARGET GROUP	DATES	COST (KSHS.)
			conflict management specialists, labor inspection team and public service boards)		
PMS	Performance Management Systems	10 Days	Executive managers in the public sector	Oct 12 - 23, 2026 April 5 - 16, 2027	154,675 Residential Executive 113,666 Residential Standard 77,236 Non-Residential
FINANCE AND PROCUREMENT MANAGEMENT PROGRAMS					
FNF	Finance for Non-Finance Managers Course	5 Days	Officers handling financial responsibilities but have no formal training in finance	March 15 - 19, 2027 May 3 - 7, 2027	79,576 Residential Executive 60,649 Residential Standard 44,774 Non-Residential
PFM	Public Finance Management Course	5 Days	Officers responsible for budgeting, revenue policy, financial reporting and the financial advisory functions.	30 Nov – 4 Dec. 2026 Jun 7 - 11, 2027	79,576 Residential Executive 60,649 Residential Standard 44,774 Non-Residential
PSFM	Public Sector Finance Management	20 Days	Officers responsible for public finance management	Sep 7 - Oct 2, 2026 Apr 5 - 30, 2027	255,316 Residential Executive 197,618 Residential Standard

SCHEDULE OF COURSES FOR 2026/2027

CODE	PROGRAMME	DURATION	TARGET GROUP	DATES	COST (KSHS.)
					132,288 Non-Residential
ACC	Audit Committee Course	3 Days	Members of Audit Committees	On Request	83,800 Residential Executive 63,800 Non-Residential
ARA	Audit and Risk Assurance Training	5 Days	Heads of audit and internal auditors	Oct 19 - 23, 2026 June 7 - 11, 2027	79,576 Residential Executive 60,649 Residential Standard 44,774 Non-Residential
PPCM	Public Procurement & Contract Management	5 Days	Senior Managers and accounting Officers responsible for providing general oversight of the procurement processes.	Nov 16 - 20, 2026 May 3 - 7, 2027	79,576 Residential Executive 60,649 Residential Standard 44,774 Non-Residential
AMC	Asset Management Course	5 Days	Managers in charge of development and maintenance of inventory of assets and liabilities.	Oct 5 - 9, 2026 May 24 - 28, 2027	79,576 Residential Executive 60,649 Residential Standard 44,774 Non-Residential
CTM	Cash and Treasury Management Training	5 Days	Accountants, Revenue officers, Budget officers, and Auditors.	Dec 7 - 11, 2026 April 12 - 16, 2027	79,576 Residential Executive

SCHEDULE OF COURSES FOR 2026/2027

CODE	PROGRAMME	DURATION	TARGET GROUP	DATES	COST (KSHS.)
					60,649 Residential Standard 44,774 Non-Residential
FIDP	Fraud Investigation, Detection and Prevention	5 Days	Law enforcement agents, internal auditors, treasurers, accountants and fund managers in all sectors.	Oct 5 - 9, 2026 May 24 - 28, 2027	79,576 Residential Executive 60,649 Residential Standard 44,774 Non-Residential
CDP	County Development Planning	5 Days	County Officers responsible for formulation, implementation and evaluation of County development Plans, Programs and Projects.	On Request	79,576 Residential Executive 60,649 Residential Standard 44,774 Non-Residential
MCA	Management of County Assembly Committee Affairs	5 Days	Committee Members	On Request	127,000 Residential Executive 87,000 Non-Residential
PROJECT MANAGEMENT AND ENVIRONMENTAL PROGRAMS					
PPM	Project Planning & Management	20 Days	Project managers, engineers, architects, surveyors, and other professionals involved in developing and managing projects	7 Sep - 2 Oct, 2026 1 - 26 Mar, 2027 3 - 28 May, 2027	255,316 Residential Executive 197,618 Residential Standard 132,288 Non-Residential

SCHEDULE OF COURSES FOR 2026/2027

CODE	PROGRAMME	DURATION	TARGET GROUP	DATES	COST (KSHS.)
PDM	Project Development & Management	20 Days	Project managers, engineers, architects, surveyors, and other professionals responsible for developing and managing projects	On Request	255,316 Residential Executive 197,618 Residential Standard 132,288 Non-Residential
RGP	Grant Proposal Writing	5 Days	Officers responsible for resource mobilization, planning, and managing projects in both national and county governments as well as the private sector.	1 - 5 Feb, 2027 14 - 18 Jun, 2027	79,576 Residential Executive 60,649 Residential Standard 44,774 Non-Residential
BEC	Basic Enforcement Course (KSG and NEMA)	10 Days	National and County officers responsible for enforcement of environmental law, M & E officers	On Request	127,000 Residential Executive 87,000 Non-Residential
RPW	Research Proposal Writing	5 Days	Officers with research responsibilities and individuals enrolled in postgraduate programs	1 - 5 Feb, 2027 14 - 18 Jun, 2027	79,576 Residential Executive 60,649 Residential Standard 44,774 Non-Residential
RBME	Results-Based Monitoring & Evaluation Course	10 Days	Officers involved in project development and management from all sectors including departmental heads, planners, and project coordinators.	10 - 21 Aug, 2026 16 - 27 Nov, 2026 3 - 14 May, 2027	154,675 Residential Executive 113,666 Residential Standard

SCHEDULE OF COURSES FOR 2026/2027

CODE	PROGRAMME	DURATION	TARGET GROUP	DATES	COST (KSHS.)
					77,236 Non-Residential
ESSD	Environmental and Social Safeguards in Development	10 Days	Political and community leaders, heads of MDAs, and project planners & managers in both public and private sector	On Request	154,675 Residential Executive 113,666 Residential Standard 77,236 Non-Residential
SRMD	Social Risk Management in Development	5 Days	Engineers, social specialists, environmental specialists, legal officers and decision makers responsible for project implementation.	12 - 16 Apr, 2027	79,576 Residential Executive 60,649 Residential Standard 44,774 Non-Residential
CPPB	Climate Change Policy, Planning and Budgeting	10 Days	Officers in environment, agriculture, planning sectors and public agencies responsible for project management	8 - 19 Mar, 2027	154,675 Residential Executive 113,666 Residential Standard 77,236 Non-Residential
PMER	Project Monitoring, Evaluation & Reporting	10 Days	All public officers responsible for project management	5 - 16 Apr, 2027	154,675 Residential Executive 113,666 Residential Standard 77,236 Non-Residential

SCHEDULE OF COURSES FOR 2026/2027

CODE	PROGRAMME	DURATION	TARGET GROUP	DATES	COST (KSHS.)
DASD	Data Analysis Skills Development	15 Days	Officers responsible for research analysis and interpretation.	10 - 28 May, 2027	215,800 Residential Executive 156,507 Residential Standard 97,800 Non-Residential
MDFP	Managing Donor Funded Projects	5 Days	Officers responsible for development projects from National and County Governments, NGOs and other Donor Funded Institutions.	On Request	79,576 Residential Executive 60,649 Residential Standard 44,774 Non-Residential

CHARGES FOR CUSTOMIZED PROGRAMS APPLY AS FOLLOWS:

1. **Kshs.118,042/=** per day if the participants choose to have their own class and are less than 25 in number (**tax -inclusive**).
2. **Kshs.4,722/=** per person per day if the participants choose to have their own class and are more than 25 in number (**tax-inclusive**).
3. If the training is in KSG, there will be extra charges for either:
 - Accommodation: Kshs.5,000/= per night per person (Tax-inclusive) or**
 - Conference Package: Kshs.4,524/= per person per day (Tax- inclusive)**
4. If the training is out of KSG, other training administrative charges will be included. Transport and accommodation charges for the facilitators as per the SRC recommended rates.

A. IN-HOUSE (OUTREACH) PREFERRED COURSES IN OUR TRAINING CALENDAR

- Kshs.118,042/=** per day if the participants are less than 25 people (**TAX-inclusive**)
- Kshs.4,722/=** per person per day if the participants are more than 25 people (**TAX-inclusive**)
- Client to cater for Transport and Daily Subsistence Allowance for facilitators

B. IN-HOUSE (OUTREACH) PROGRAMS NOT IN OUR TRAINING CALENDAR (TAILOR-MADE)

- Kshs.177,062/=** per day per group (**VAT-inclusive**) to include material development.
- Other administrative charges will be included as per the agreement
- Client to cater for Transport and Daily Subsistence Allowance for facilitators

C. CONSULTANCIES

- Kshs.177,062/=** per day for consultancies (**VAT-inclusive**)
- Other administrative charges will be included as per the agreement.
- If the Consultancy is out of KSG, charges will be included such as transport and accommodation for the consultants as per the SRC recommended rates.

APPLICATION PROCEDURE

1. Access the Course application portal by clicking on the following link: **KSG APPLICATION LINK** or **ksg.ac.ke**
2. Create an account on the portal. Upon account creation, you will receive an email with a confirmation link. Please check both your inbox and spam folder, as sometimes the confirmation link may be filtered into the spam folder.
3. Click on the confirmation link received in your email to activate your account and proceed with the application process. When applying for the course, please ensure to select the appropriate campus, either Mombasa or another campus, and choose the dates that are convenient for you.
4. After successfully submitting your application, the system will automatically generate a proforma invoice. You can access and download this invoice from your participant portal, where you made the application.
5. It is essential to print or download the proforma invoice for your records. We will process your offer letter accordingly.

PAYMENT DETAILS

The course fee should be paid into the Kenya School of Government Mombasa Account, after obtaining the admission letter and pro-forma invoice.

Account Name:	Kenya School of Government Mombasa
Account Number:	1145993303
Bank Name:	Kenya Commercial Bank
Bank Branch:	Treasury Square Mombasa
Bank Code:	1102
Swift Code	KCBLKENYX
Pay bill No:	522522
Account:	1145993303

FOR MORE INFORMATION CONTACT US

KSG MOMBASA CAMPUS

Admissions Office

Kenya School of Government

P.O. Box 84027 - 80100

Mombasa, Kenya

Tel: (041) 2312785/2227113/ 2228800 /2226871

Cell: +254-743-178-109/+254-758-825-085

Email: admissions.mombasa@ksg.ac.ke, director.mombasa@ksg.ac.ke